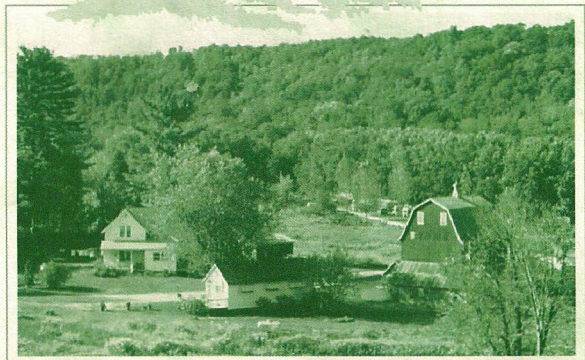


Maple Springs *"The Beautiful"* *Campground, Inc.* *and Country Store*

West of Forestville State Park
on beautiful Forestville Creek



Our campground is on a century old farm, nestled in a valley formed by Forestville Creek. Come spend some quality time with your family or alone and unwind in our quiet campground. Fish, hike our nature trails, count the many species of birds that abound in our valley and let the gurgling stream lull you to sleep.

We are within hiking distance of Forestville State Park, just minutes from two famous caves, the bike trail, area golf courses, canoe streams, a large Amish community, and two Laura Ingalls Wilder sites.

Maple Springs Campground, Inc.
& Country Store

21606 CO 118 • Preston, MN 55965

507-352-2056

E-mail: maplecamp@hmtel.com

www.maplespringscampground.com

John & Doris Palmer • Lois VanderPlas

Maple Springs

Campground and Country Store

- 69 Large, Grassy, Clean Campsites with Picnic Tables & Fire Rings
- 30/50 amp Elec. Service & Water
- 31 Tent Sites

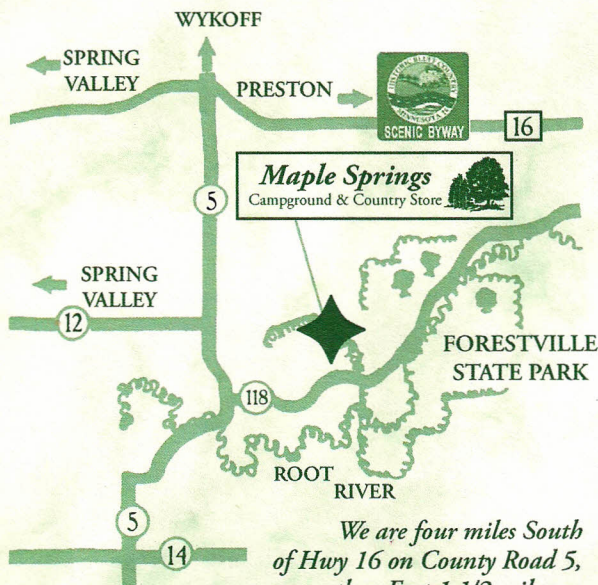


Our **Country Store** has RV & Camping Supplies, Groceries, Snacks, Ice, Fishing Tackle & Bait, Fire Wood & More to fulfill your camping needs. Enjoy Trout Fishing, Nature Trails, Bird Watching or just relax and enjoy our quiet wooded bluffland valley with a trout stream full of native brown trout.

For reservations, please call

507-352-2056

www.maplespringscampground.com



We are four miles South of Hwy 16 on County Road 5, then East 1 1/2 miles on County Road 118.



Members of
Southeastern Minnesota
**HISTORIC BLUFF
COUNTRY, INC.**